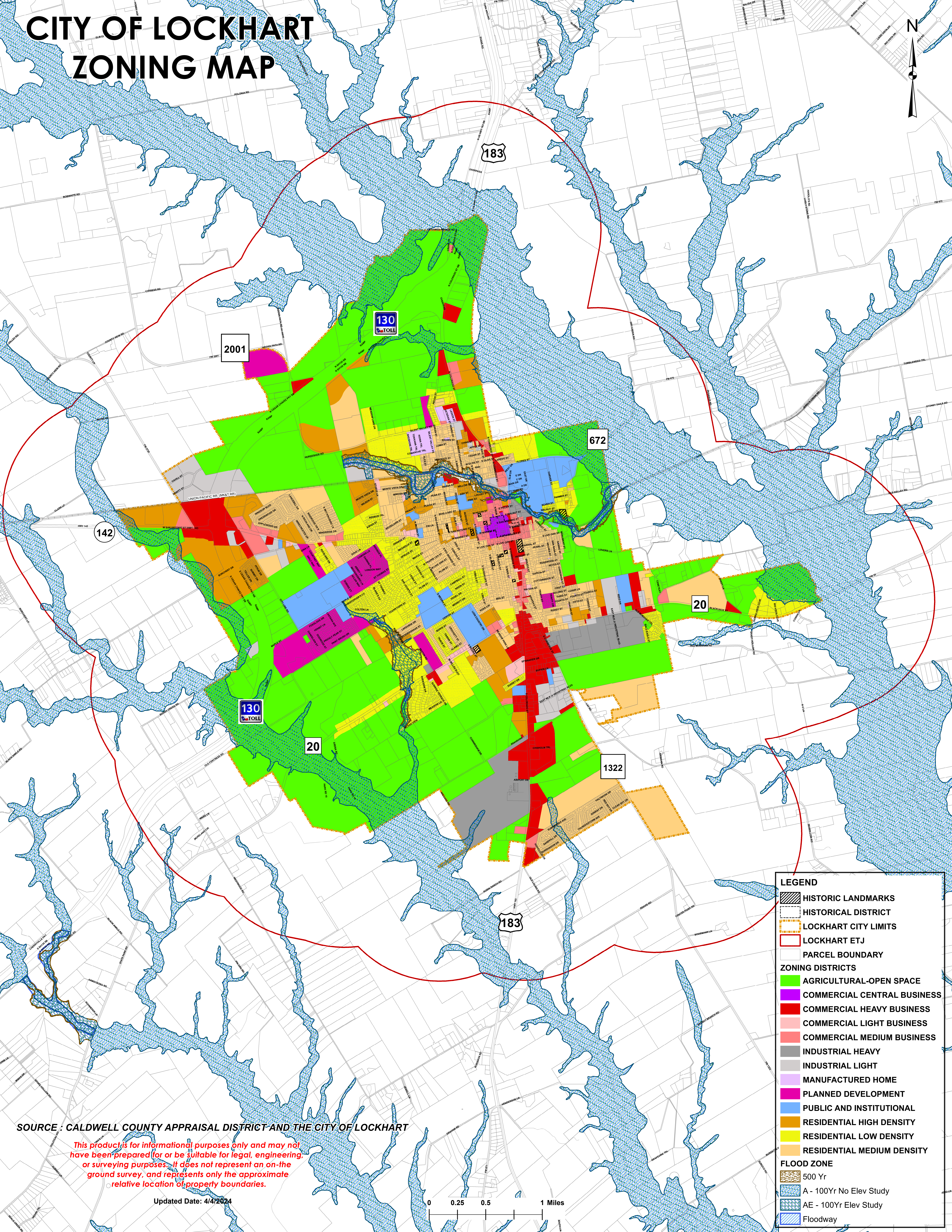
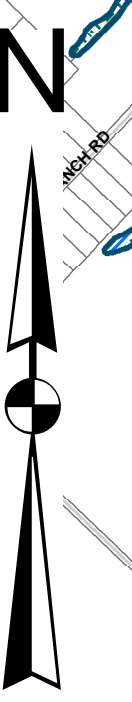


CITY OF LOCKHART ZONING MAP



LEGEND

- HISTORIC LANDMARKS
- HISTORICAL DISTRICT
- LOCKHART CITY LIMITS
- LOCKHART ETJ
- PARCEL BOUNDARY
- ZONING DISTRICTS**
- AGRICULTURAL-OPEN SPACE
- COMMERCIAL CENTRAL BUSINESS
- COMMERCIAL HEAVY BUSINESS
- COMMERCIAL LIGHT BUSINESS
- COMMERCIAL MEDIUM BUSINESS
- INDUSTRIAL HEAVY
- INDUSTRIAL LIGHT
- MANUFACTURED HOME
- PLANNED DEVELOPMENT
- PUBLIC AND INSTITUTIONAL
- RESIDENTIAL HIGH DENSITY
- RESIDENTIAL LOW DENSITY
- RESIDENTIAL MEDIUM DENSITY
- FLOOD ZONE**
- 500 Yr
- A - 100Yr No Elev Study
- AE - 100Yr Elev Study
- Floodway

SOURCE : CALDWELL COUNTY APPRAISAL DISTRICT AND THE CITY OF LOCKHART

This product is for informational purposes only and may not have been prepared for or be suitable for legal, engineering, or surveying purposes. It does not represent an on-the-ground survey, and represents only the approximate relative location of property boundaries.

Updated Date: 4/4/2024

0 0.25 0.5 1 Miles